

Biostrom

firing and steam boiler

- ◆ Injection firing
- ◆ 1.820 kg/h sanding dust from wood floor production <W10
- ◆ Oil burner for start-up
- ◆ Firing thermal capacity: 8.650 kW_{th}
- ◆ Smoke tube boiler capacity: 7.860 kW_{th}
- ◆ Quantity of steam: 9.600 kg/h
- ◆ Steam pressure: 28 bar_a
- ◆ Steam temperature: 435 °C

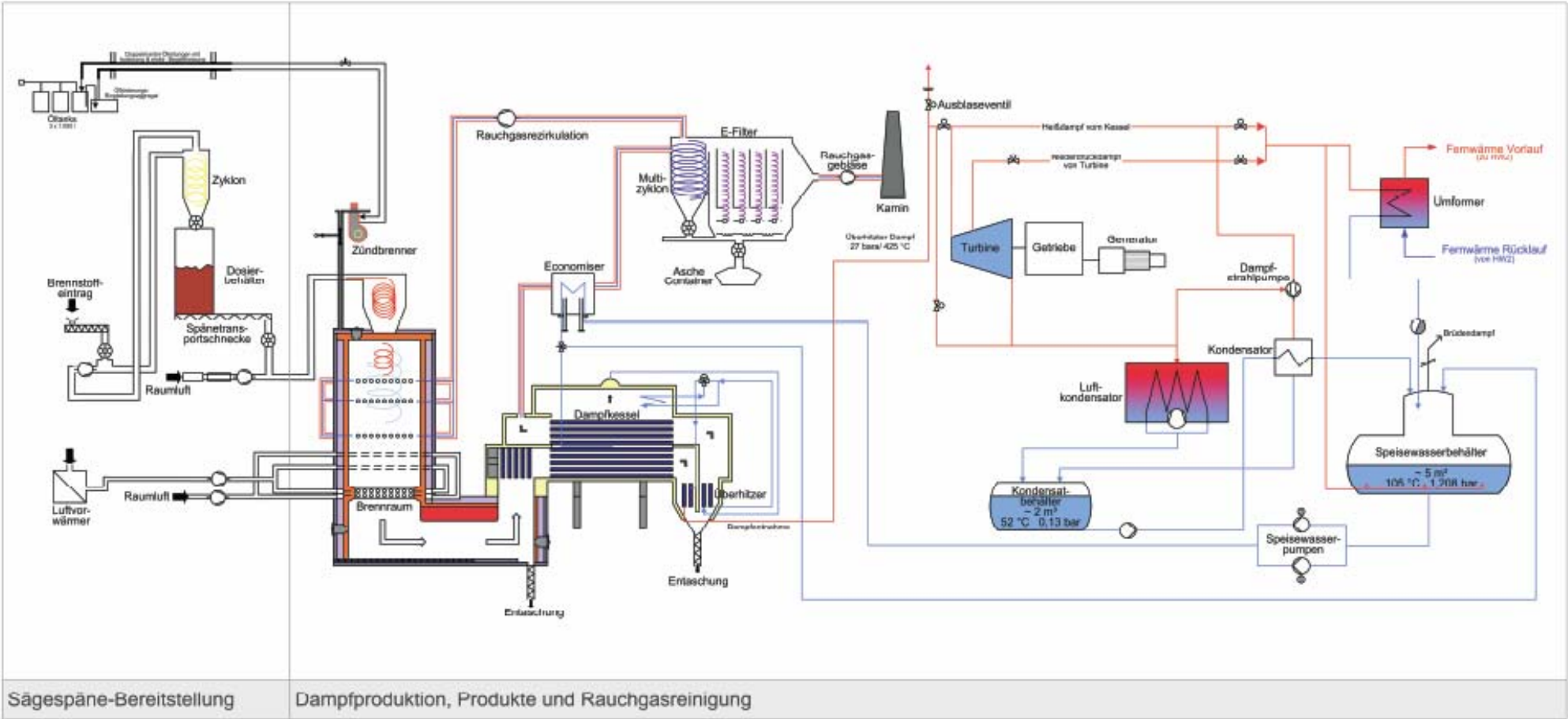
turbine

- ◆ Condensing turbine with unregulated tapping
- ◆ Quantity of steam: 9.500 kg/h
- ◆ Steam pressure: 27 bar_a
- ◆ Steam temperature: 425 °C
- ◆ Exhaust steam pressure: 0,13 bar_a
- ◆ Minimal pressure tapping: 2,5 bar_a
- ◆ Maximum tapping quantity: 4.700 kg/h

transformation of energy

- ◆ Rotation speed: 8.666 1/min
- ◆ 4-pin synchronous generator: 1.500 1/min
- ◆ Max. generator capacity: 1.698 kW_{el} (without heat extraction)
- ◆ Generator capacity: 1.370 kW_{el} (at maximum heat extraction)
- ◆ Max. thermal capacity: 3.500 kW_{th}
- ◆ transformer 400/20.000 V for network supply

scheme



Sägespäne-Bereitstellung

Dampfproduktion, Produkte und Rauchgasreinigung